

Community Meeting

Proposed Junior Boundary Change for Greenland PS & Norman Ingram PS

Tuesday, December 12, 2017

This presentation will be made available on the TDSB public web site at www.tdsb.on.ca.
Click on **Accommodation Reviews** at the bottom of the page.



Agenda

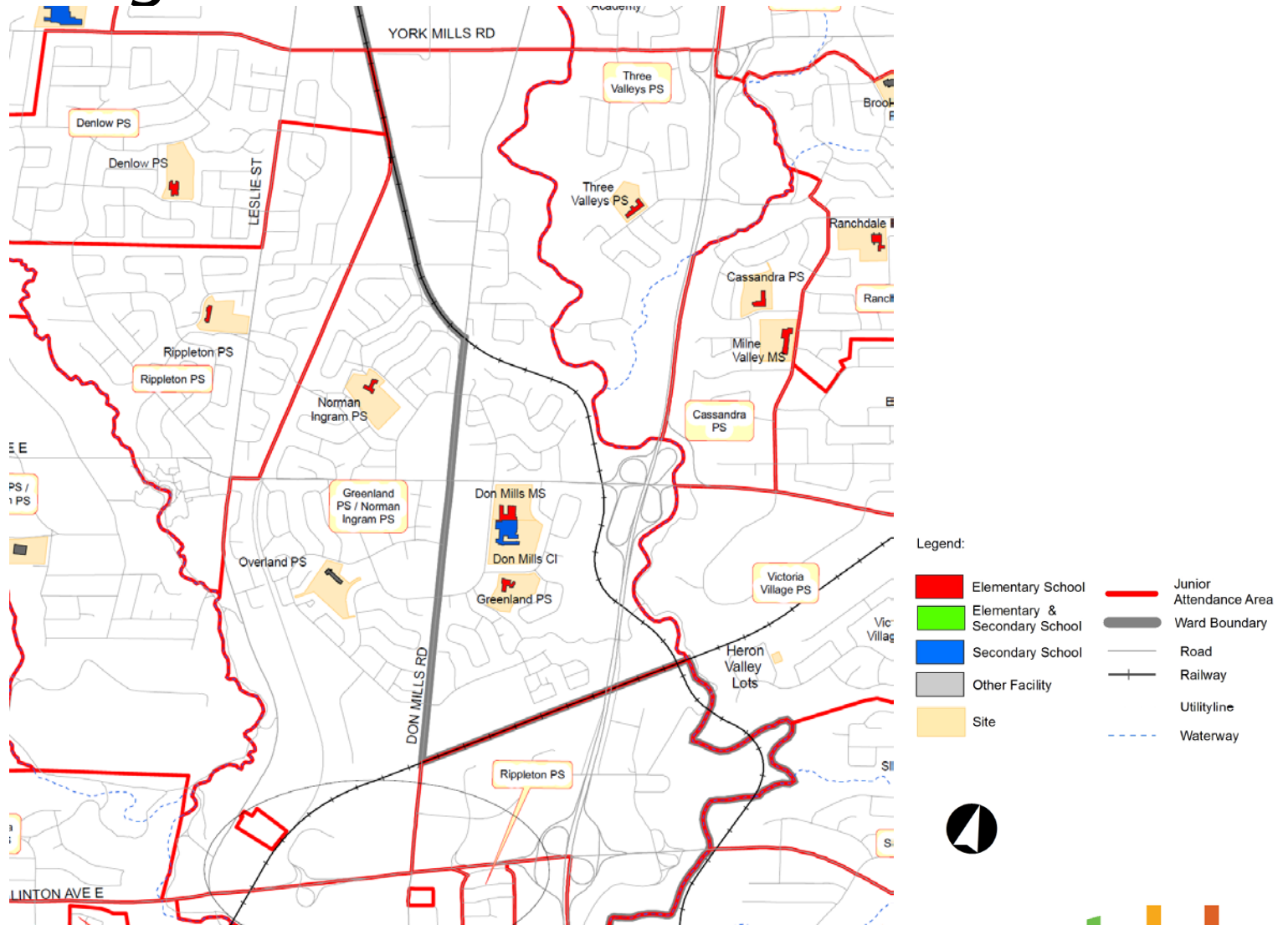
7:00 p.m. to 9:00 p.m.

| | |
|----|--|
| 1. | Welcome and Introductions |
| 2. | Background – Why are we here? |
| 3. | Options Considered |
| 4. | Proposed Boundary Change |
| 5. | Next Steps |
| 6. | Questions, Answers and Feedback from the Community |
| 7. | Adjournment |

Background

- The boundary between Greenland PS & Norman Ingram PS is 100% shared – an anomaly in the Board
- The Long-Term Planning & Accommodation Strategy (LTPAS) Accommodation Driver – Distinct Attendance Areas
 - “Avoid shared attendance boundaries and split attendance areas”
- A review has been in the LTPAS since 2013 to address the boundary between the two schools

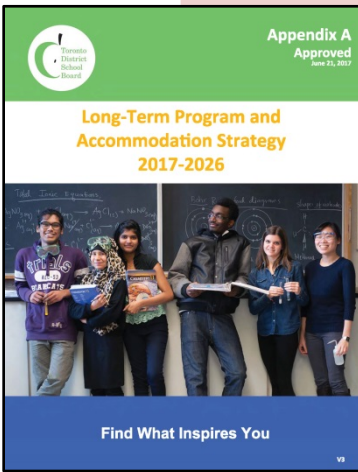
Background: Junior Attendance Areas



Program Area Review Process

STEP 1

Long Term Program Accommodation Strategy (LTPAS)



STEP 2

Local Feasibility Team (LFT) is formed

- Comprised of superintendents, principals, trustees and central staff
- Review data, discuss impacts of proposed changes

STEP 3

Program Area Review Team (PART) is formed

- Comprised of LFT members plus parent/guardian representatives
- Review data, discuss impacts of proposed changes and makes recommendations
- Public meeting is held

STEP 4

Planning and Priorities Committee and Board of Trustees

- Central staff present recommendations to Board of trustees, in consultation with the PART
- Board makes final decision on recommendations

Current Review

- Guided by the Long Term Program & Accommodation Strategy 2017-2026
 - Provides program and accommodation drivers
 - Identifies issues and gaps across the system & studies to address those issues / gaps
- Impacted Schools: Greenland PS & Norman Ingram PS
 - “Explore a review of the existing shared elementary attendance area between Greenland PS and Norman Ingram PS. Neither school currently has a defined catchment area.”
 - “Emerging residential communities at the intersection of Don Mills Rd. and Eglinton Ave. Celestica Lands and 1095 Leslie St. should be considered during this study.”

Options Considered

| | |
|---|---|
| 1 | Keep the Status Quo |
| | <p>Comments:</p> <ul style="list-style-type: none">• Does not meet an accommodation driver outlined in the LTPAS• Relies on balance created by school administrators |
| 2 | Split the Shared Greenland PS & Norman Ingram PS Attendance Boundary |
| | <p>The Local Feasibility Team and Program Area Review Team considered 6 different boundary configurations</p> <p>Comments:</p> <ul style="list-style-type: none">• Meets LTPAS driver of distinct attendance areas• Balances enrolment prior to introduction of residential development• Minimizes transportation needs |

Status Quo Enrolment & Utilization Rates

| Scenario: Status Quo | | | | | | | | | | | | | | | |
|----------------------|-------------------------|----------|-------------|-------------|-----------|-----------------------------|----------|-------------|-------------|-----------|-----------------------------|----------|-------------|-------------|-----------|
| School | October 31, 2017 Actual | | | | | October 31, 2022 Projection | | | | | October 31, 2027 Projection | | | | |
| | Total HC | Capacity | Utilization | HC-Capacity | Portables | Total HC | Capacity | Utilization | HC-Capacity | Portables | Total HC | Capacity | Utilization | HC-Capacity | Portables |
| Greenland PS | 156 | 222 | 70% | -66 | 1 | 262 | 222 | 118% | 40 | 3 | 309 | 222 | 139% | 87 | 5 |
| Norman Ingram PS | 209 | 225 | 93% | -16 | 1 | 301 | 225 | 134% | 76 | 3 | 336 | 225 | 149% | 111 | 5 |
| Total | 365 | 447 | 82% | -82 | 2 | 563 | 447 | 126% | 116 | 6 | 645 | 447 | 144% | 198 | 10 |

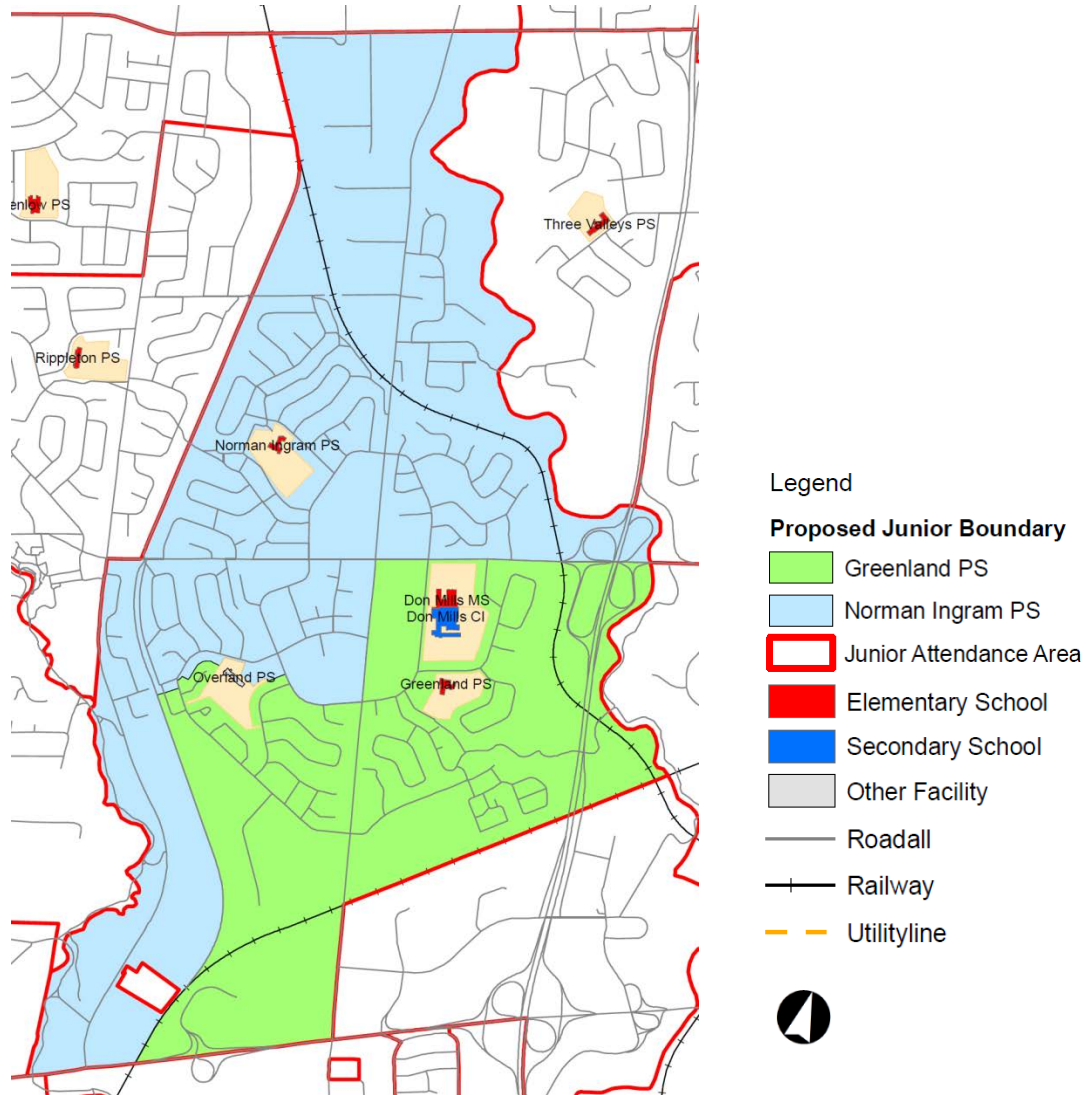
- Model assumes the administrative balance between the two schools will continue
- Assumes that pupils from new development will be evenly split between Greenland PS and Norman Ingram PS

Projected Enrolment & Utilization Rates: Proposed Boundary Realignment

| Scenario: Scenario 1.1a | | | | | | | | | | | | | | | |
|-------------------------|-------------------------|----------|-------------|-------------|-----------|-----------------------------|----------|-------------|-------------|-----------|-----------------------------|----------|-------------|-------------|-----------|
| School | October 31, 2017 Actual | | | | | October 31, 2022 Projection | | | | | October 31, 2027 Projection | | | | |
| | Total HC | Capacity | Utilization | HC-Capacity | Portables | Total HC | Capacity | Utilization | HC-Capacity | Portables | Total HC | Capacity | Utilization | HC-Capacity | Portables |
| Greenland PS | 156 | 222 | 70% | -66 | 1 | 300 | 222 | 135% | 78 | 4 | 348 | 222 | 157% | 126 | 6 |
| Norman Ingram PS | 209 | 225 | 93% | -16 | 1 | 222 | 225 | 99% | -3 | 1 | 219 | 225 | 97% | -6 | 0 |
| Total | 365 | 447 | 82% | -82 | 2 | 522 | 447 | 117% | 75 | 5 | 567 | 447 | 127% | 120 | 6 |
| Difference | 0 | 0 | 0% | 0 | 0 | -41 | 0 | -9% | -41 | -1 | -78 | 0 | -17% | -78 | -4 |

- Model assumes implementation starts in 2019
- Existing Greenland PS & Norman Ingram PS students and siblings can be 'grandparented'
- Modeling assumes full build out of residential development over 6 years – removing Celestica development drops Greenland PS to 82%

Proposed Realignment of Junior Attendance Boundary



Next Steps In Process

- We will **collect and review your feedback** from tonight.
- Visit: www.tdsb.on.ca/accommodationreviews
 - Scroll to Program Area Review (PART)
 - Select 'Greenland PS and Norman Ingram PS'
 - This presentation will be posted on the site in the next few days
- You can also submit feedback **by email** at accommodationreviews@tdsb.on.ca until noon on Friday December 15, 2017.
- We will decide **if we make any changes** to the preferred option. We will make a report that shows our preferred option. That report will be submitted to TDSB Staff and then Trustees.

Next Steps In Process

- **Staff's final recommendation** will be posted on school and TDSB websites in the near future.
- On Wednesday, February 28 , 2018 at 5:00 p.m., the **Planning and Priorities Committee** (made up of Trustees) will review the recommendation report of this PART, and the report made by Staff.
- **Members of the public can make a delegation** to this Committee. Forms are available here tonight.
- At the Board Meeting on March 21, 2018, **Trustees will vote** on the preferred grade and boundary change and **we will post the decision to the Review website.**

Questions, Answers and Feedback from the Community

Adjournment

Thank you!

This presentation is available on the TDSB public web site at
www.tdsb.on.ca.

Click on [Accommodation Reviews](#) at the bottom of the page.



Toronto
District
School
Board